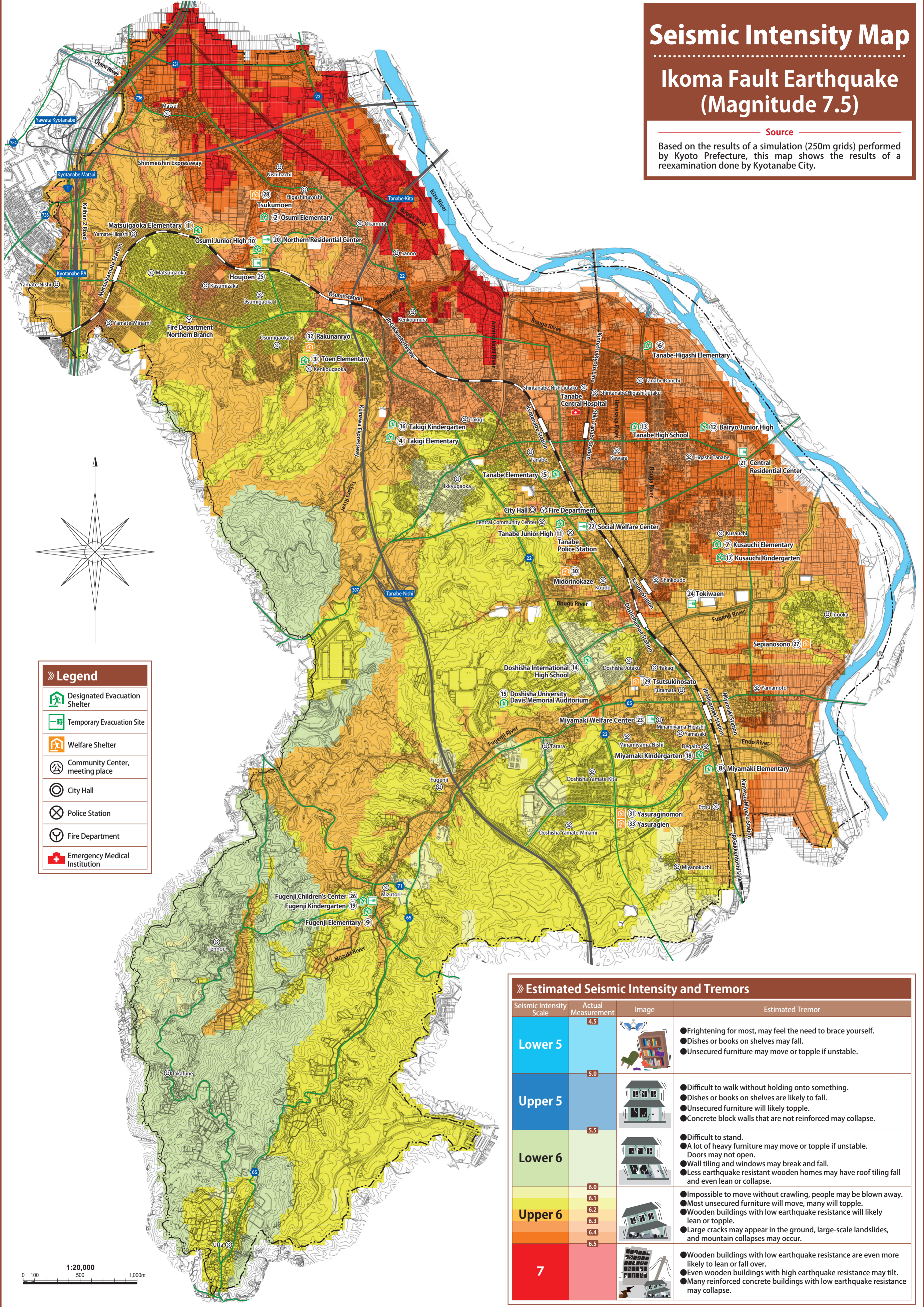


Seismic Intensity Map

Ikoma Fault Earthquake (Magnitude 7.5)

Source

Based on the results of a simulation (250m grids) performed by Kyoto Prefecture, this map shows the results of a reexamination done by Kyotanabe City.



Legend

- Designated Evacuation Shelter
- Temporary Evacuation Site
- Welfare Shelter
- Community Center, meeting place
- City Hall
- Police Station
- Fire Department
- Emergency Medical Institution

Estimated Seismic Intensity and Tremors

Seismic Intensity Scale	Actual Measurement	Image	Estimated Tremor
Lower 5	4.5		<ul style="list-style-type: none"> ●Frightening for most, may feel the need to brace yourself. ●Dishes or books on shelves may fall. ●Unsecured furniture may move or topple if unstable.
Upper 5	5.0		<ul style="list-style-type: none"> ●Difficult to walk without holding onto something. ●Dishes or books on shelves are likely to fall. ●Unsecured furniture will likely topple. ●Concrete block walls that are not reinforced may collapse.
Lower 6	5.5		<ul style="list-style-type: none"> ●Difficult to stand. ●A lot of heavy furniture may move or topple if unstable. Doors may not open. ●Wall tiling and windows may break and fall. ●Less earthquake resistant wooden homes may have roof tiling fall and even lean or collapse.
Upper 6	6.0		<ul style="list-style-type: none"> ●Impossible to move without crawling, people may be blown away. ●Most unsecured furniture will move, many will topple. ●Wooden buildings with low earthquake resistance will likely lean or topple. ●Large cracks may appear in the ground, large-scale landslides, and mountain collapses may occur.
	6.1		
	6.2		
	6.3		
	6.4		
7	6.5		<ul style="list-style-type: none"> ●Wooden buildings with low earthquake resistance are even more likely to lean or fall over. ●Even wooden buildings with high earthquake resistance may tilt. ●Many reinforced concrete buildings with low earthquake resistance may collapse.

1:20,000
0 100 500 1,000m