

Kyotanabe City

Earthquake Hazard Map 《 Seismic Intensity Map 》

See Reverse For
Regional
Risk Map

About this Map

- 》 This map shows the distribution (epicenter and magnitude) of potential earthquakes and the expected seismic intensity calculated based on the terrain and ground conditions.
- 》 This map is based on potential earthquakes that may occur on the Ikoma Fault, an active fault in the neighboring areas of Kyotanabe which would have a major impact on Kyotanabe in the event of an earthquake.
- 》 Calculations are made using approximately 50m² grids as units. Make sure to check the estimated seismic intensity for the area around your home as well as for areas that you visit often.

Disaster Information Communication

< Disaster Emergency Message Service "171" >

During disasters such as earthquakes, even if phone lines are not damaged, you may not be able to make a phone call, due to the high volume of calls being made in a short period of time. A voice mail message service can be used to confirm the safety of others by dialing "171".



To Record a Message

Dial **171**

- Follow the audio instructions and press **1**
- **0774-XX-XXXX** (Recipient's Phone #)

To Listen to a Message

Dial **171**

- Follow the audio instructions and press **2**
- **0774-XX-XXXX** (Recipient's Phone #)

Additionally, since it is easier to reach people using the texting function on mobile phones, instead of calling, it would be helpful to become used to this function ahead of time.

< Send Us Information >

During disasters, it is more difficult than usual for the city hall and other government agencies to obtain regional information. If you notice:

- Damaged roads that cars are unable to pass through
- Running water is unavailable or water pipes are damaged and leaking

or any other damage, please inform City Hall of the location (address or landmark).

Disaster Prevention Notebook For Your Household

Meeting place decided by the family

Contact method decided by the family

Agreements made by the family

Family Contact Information

Name	Contact (Work/School)	Cell Phone Number

Emergency Kit Checklist ☐ Place a check mark in each box.

- ☐ • Flashlight
• Portable Radio
• Mobile Phone



- ☐ • Drinking water
(3 liters per person per day)
• Emergency food rations



- ☐ • Medicine



- ☐ • Clothing
(including underwear)



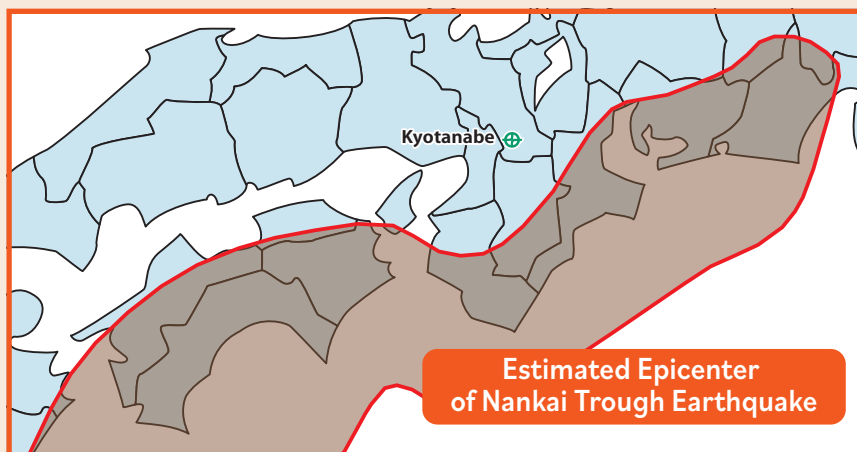
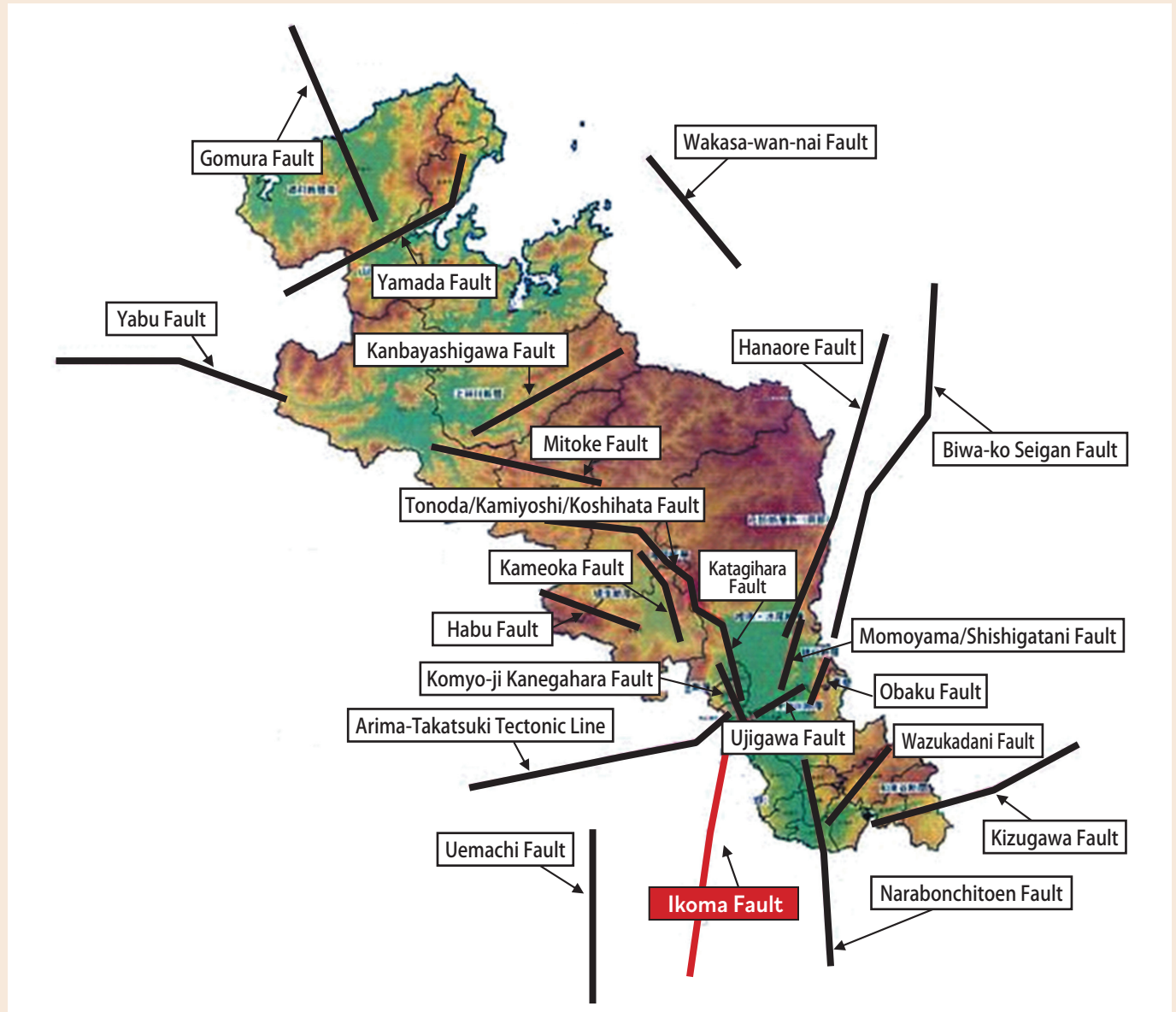
- ☐ • Valuables/Cash
*Loose change is useful for public phones



Potential Earthquakes

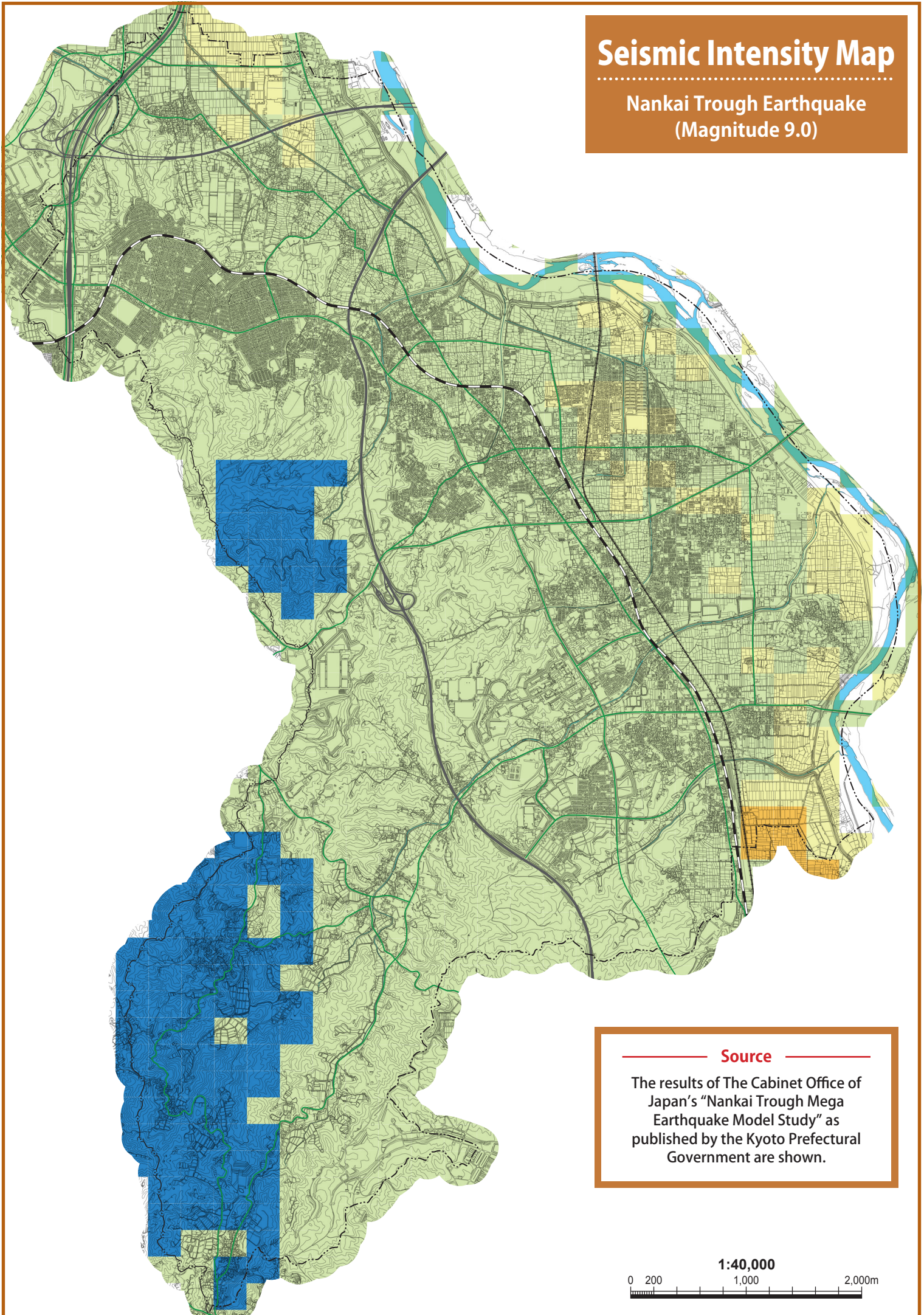
According to an earthquake damage estimation survey by Kyoto Prefecture, there is a possibility of 24 different earthquakes which can occur on 22 different active faults located in Kyoto Prefecture and surrounding areas, as well as ocean-trench earthquakes such as a Tonankai/Nankai earthquake and a Nankai Trough earthquake.

As a result, earthquakes that would cause particularly intense shaking in Kyotanabe would be those that occur on the Ikoma Fault (active fault line) and in the Nankai Trough (ocean-trench).



Seismic Intensity Map

Nankai Trough Earthquake
(Magnitude 9.0)



Source

The results of The Cabinet Office of Japan's "Nankai Trough Mega Earthquake Model Study" as published by the Kyoto Prefectural Government are shown.

1:40,000

0 200 1,000 2,000m